



AN **ON**POINT COMPANY

# GUARANTEED FLEET

---

The solution to all of your  
Material Handling and Facility  
Services needs!



# ABOUT TFS

---

At TFS we use our expertise to engineer and implement cost effective solutions that improve productivity and enhance safety while allowing our customers to focus on their core business. Our broad services allow us to offer a "One-Stop-Shop" for all mission critical Material Handling and Facilities Services needs.

## THE OBJECTIVE

---

Guaranteed Fleet offers the following:

- 100% fleet up-time
- Optimized power for productivity and safety improvement
- Embed maintenance with our technicians on-site available 24/7
- Customized telematics and operator safety program
- KPI's and operational assurance
- Flexible benefits with options to utilize TFS Certified Minority and Woman Owned Business entity

This program leverages comprehensive fleet management services and is designed to benefit locations with large fleets, increasing costs, operator safety issues, and productivity concerns.

# CUSTOMER EXAMPLE

## Customer Concerns:

- Operator Safety
- PIV Fleet Productivity
- Operational Assurance
- Fleet Flexibility
- Cost Savings
- Continuous Overall Improvement

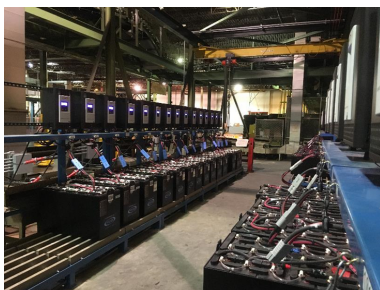


## TFS Solution:

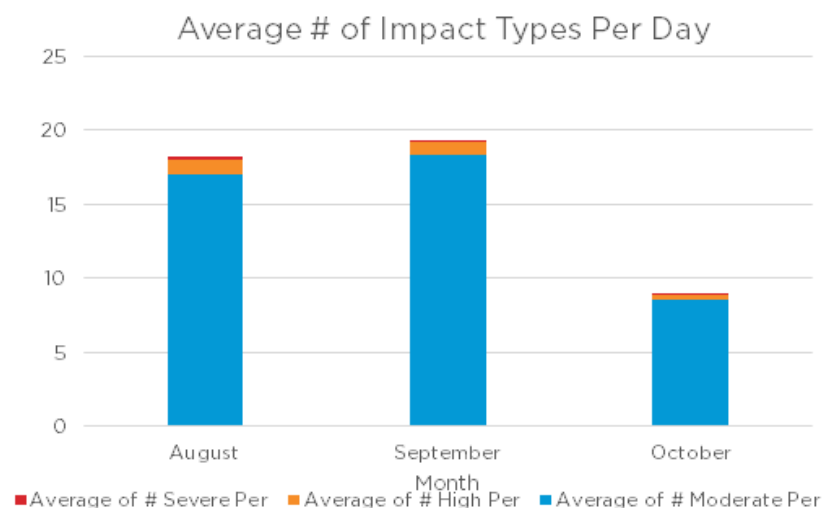
- Replaced 60% of the assets with standard specifications to facilitate asset rotation and efficiency.
- Converted LP equipment to electric for over 80% of the fleet to improve efficiency, sustainability, and long-term cost reduction.
- 100% of the PIV fleet is equipped with a single telematics technology which has decreased operator mis-use and improved safety.
- Guaranteed maintenance with 60 month coverage.
- Revolutionary Power model guaranteed battery and charger life for 5 years and decreased battery changing by 33%.

# RESULTS

By revolutionizing the way this facility manages their material handling assets, the TFS solution implemented guaranteed up-time and savings. Our full life cycle engineered this solution to reduce total cost of ownership, increase productivity, and ensure safe facility operations.



\*maintenance shop & battery storage area



\*Data from telematics reporting Abuse impacts